



KAMLOOPS AIRPORT
BVOP MANUAL
(BOAT VEHICLE OPERATOR PERMIT)

Dated: March 15, 2025



Kamloops Airport Ltd.
101 – 3035 Airport Rd.
Kamloops BC
V2B 7X2

Monday – Friday 08:00 – 16:00 **250.376.3613 ext.0**

Alternate & All Other Hours **250.376.3233**

Contents

.....	1
Definitions	3
Kamloops Airport Floatplane Dock	4
Introduction	4
What is a Water Aerodrome?	4
Kamloops Airport Boat Launch.....	4
How to Obtain a BVOP	5
Operating Procedures	6
Operating Procedures	6
Parking.....	7
Safety and Security	8
Safety and Security	8
Safety Management System (SMS)	8
Medical Emergencies	9
Prohibiting the Feeding of Wildlife.....	9
Sample Test.....	10
BVOP Answer Key	12



Definitions

Beach- Waterfront area between launch and lower docks/upper deck.

Boat- Any leisure craft including motor boat, sea-doo, kayak, canoe and/or other watercraft including floatation devices.

Boat Vehicle Operator Permit (BVOP)- A permit issued by the Kamloops Airport to allow a person to launch their boat at the Kamloops Airport Floatplane Dock.

Dock area- Includes upper deck, gangway, lower docks, launch, Vantage Point, & KAAS Park.

Gangway- The bridging connection from the upper deck to the lower docks.

KAAS Park- Viewing and picnic area directly East of the Float Plane Dock. Named after the Kamloops Airport Authority Society.

KAL- Kamloops Airport Ltd. – the operator of Kamloops Airport.

Launch- Extended concrete driveway used to launch aircraft and boats.

Lower Docks- The floating dock sections used for loading, unloading and aircraft parking.

Maneuvering Area- Entrance of the boat launch for aircraft movement and boat launching.

Security Personnel- An individual who is contracted to the aerodrome to detect, prevent, respond to, and assist in the recovery from acts or attempted acts of unlawful interference with civil aviation

Upper Deck- The elevated walkway that connects the parking lot to the gangway and lower docks.

Vantage Point- The viewing area West of the Float Plane Dock featuring a seating area and pergola look out.

Kamloops Airport Floatplane Dock

Introduction

The Kamloops Airport Floatplane Dock is located on Aviation Way adjacent to the South Thompson River. Officially designated a Water Aerodrome, this base has been welcoming floatplane operators for half a century.

The site has undergone many transformations over the years, the most recent in 2018 which modernizes the key components of the area including the lower docks, upper deck, gangway and launch. The opportunity was also taken to connect the City of Kamloops Rivers Trail through the area to welcome the community to Kamloops Airport. Its primary purpose is a water aerodrome with availability for boats and leisure craft usage as well. The following will provide information, guidelines and rules regarding safe operations at this facility.

What is a Water Aerodrome?

The International Civil Aviation Organization defines a water aerodrome as “A defined area, primarily on water, intended to be used either wholly or in part for the arrival, departure and movement of aircraft, and any building and equipment on ground or water.” The Water Aerodrome is owned and operated by Kamloops Airport Ltd (KAL).

Kamloops Airport Boat Launch

The Kamloops Airport Boat launch is an access point for licensed users to the South Thompson River in Kamloops. The boat launch is trailer accessible and is available from spring until the fall each year for users that complete the Boat Vehicle Operator Permit (BVOP) Program. Seasonal opening and closing of the boat launch is in coordination with the City of Kamloops boat launch operations. This program was created to ensure safety for aircraft and boat operations at a combined use facility. KAL reserves the right to close the boat launch for special aviation events, and if deemed unsafe.

How to Obtain a BVOP

To receive a BVOP for the season, you will be required to familiarize yourself with the contents of this program, complete the BVOP test with a 100% pass, complete the application, and submit the annual fee of \$75 + GST. Once you are ready to write the test, please call 250.376.3613 ext.0 or email info@kamloopsairport.com to make an appointment in advance.

Upon arrival, you may park at the Airport Operations Building (located to the West of the Air Terminal Building). There is “visitor parking” right at the front doors near the administration office. Please bring your completed application, driver’s license, and your pleasure craft operator card to be viewed at the time of application. Once you have completed the test and submitted the annual fee, you will be given the access code for the boat launch. Your BVOP pass will be ready for pickup within one week.



Operating Procedures

Operating Procedures

In all circumstances, aircraft have the right of way at this facility, and you must always give right of way to aircraft operations. An aircraft may approach from the water or land at any time and as a boat operator, you are responsible for leaving the area immediately to make way for the aircraft. An aircraft on the river may be unable to quickly maneuver or stop, and may approach the beach, launch, or docks with engines running, and at higher speeds.

1. For your safety, if an aircraft is inbound or departing from this facility, please leave the beach, lower launch and dock areas.
2. Boaters may not operate within 5 meters (15 feet) of any aircraft in motion, or parked.
3. Boaters may only use the south side (river side) of the lower docks for loading and unloading for a maximum duration of 30 minutes.
4. The lower beach is reserved for aircraft operations and may not be used for staging boats.





Parking

1. Vehicles with trailers may park in delineated spots on the East end of the parking area.
2. The aircraft maneuvering area must always be kept clear of vehicle parking.
3. There shall be no overnight parking or storage at the facility.

Safety and Security

Safety and Security

Safety and Security must be maintained during all operations at the Kamloops Airport Floatplane Dock. Use of the area is based on the following requirements:

1. *“No person shall operate any vessel, or cause any obstruction, on the surface of any part of a water area of an airport that is to be kept clear of obstructions in the interest of aviation safety, when ordered, by signal or otherwise, to leave or not to approach that area by the appropriate air traffic control unit or flight service station or by the operator of the airport.” Canadian Aviation Regulations 302.10(d)*
2. Kindly follow directions from Kamloops Airport Staff, Kamloops Airport Security (GardaWorld), RCMP, Community Service Officers, or Emergency Services.
3. Pets are not permitted on beach, dock or launch. Please keep all animals on leash, and out of the water, and ensure to clean up after your pet.
4. For personal safety, swimming is not permitted at this facility. Aircraft may be unable to see, stop or maneuver around a person or animal in water.
5. Drug and alcohol consumption are prohibited at this facility.
6. The Kamloops Airport Floatplane Dock area is under video surveillance.
7. Passholders are responsible for ensuring the launch is closed and secured behind them. Confirmed reports of unsecured gates may result in revocation of your permit.
8. Piggybacking: Your pass is valid for your personal access and registered boat only, and is non-transferable. Use of pass for friends and family is prohibited. Any violations will result in permanent termination of facility use.

Safety Management System (SMS)

One of Kamloops Airport Ltd.’s core business values is safety. All BVOP holders shall report any incident, accident, or safety concern to Kamloops Airport by calling 250.376.3613 or emailing operations@kamloopsairport.com

Safety concerns can also be entered into the Safety Management System (Vortex) through <http://yka.vortexcms.com/safety-concern>. For immediate concerns contact Airport Security at 250.214.0117



Medical Emergencies

For medical emergencies, call 911 and then contact Airport Emergency Operations at 250.376.3233.

Prohibiting the Feeding of Wildlife

Kamloops Airport maintains a policy prohibiting the feeding of wildlife. The feeding of wildlife is strictly prohibited in the interest of aviation safety. Kamloops Airport Floatplane Dock users must place all food waste in the receptacles provided.

Sample Test

Name: _____

Date: _____

- 1. What should you do if you see an unsecured launch gate?
 - a. Leave it as it is
 - b. Secure it and report the incident
 - c. Use it without concern

- 2. What is the penalty for allowing someone else to use your access code?
 - a. A \$50 fine
 - b. A warning from Airport Security
 - c. Permanent termination of access

- 3. Which of the following is not permitted at the floatplane dock?
 - a. Swimming
 - b. Overnight Parking
 - c. Drug and alcohol use
 - d. All of the above

- 4. What is the minimum distance a boat must maintain from an aircraft?
 - a. 1 meter
 - b. 3 meters
 - c. 5 meters

- 5. Who has right of way for launching?
 - a. Boats
 - b. Whoever arrives first
 - c. Aircraft

- 6. What is prohibited at the floatplane dock?
 - a. Feeding Wildlife
 - b. Docking for more than 30 minutes
 - c. Littering
 - d. All of the above

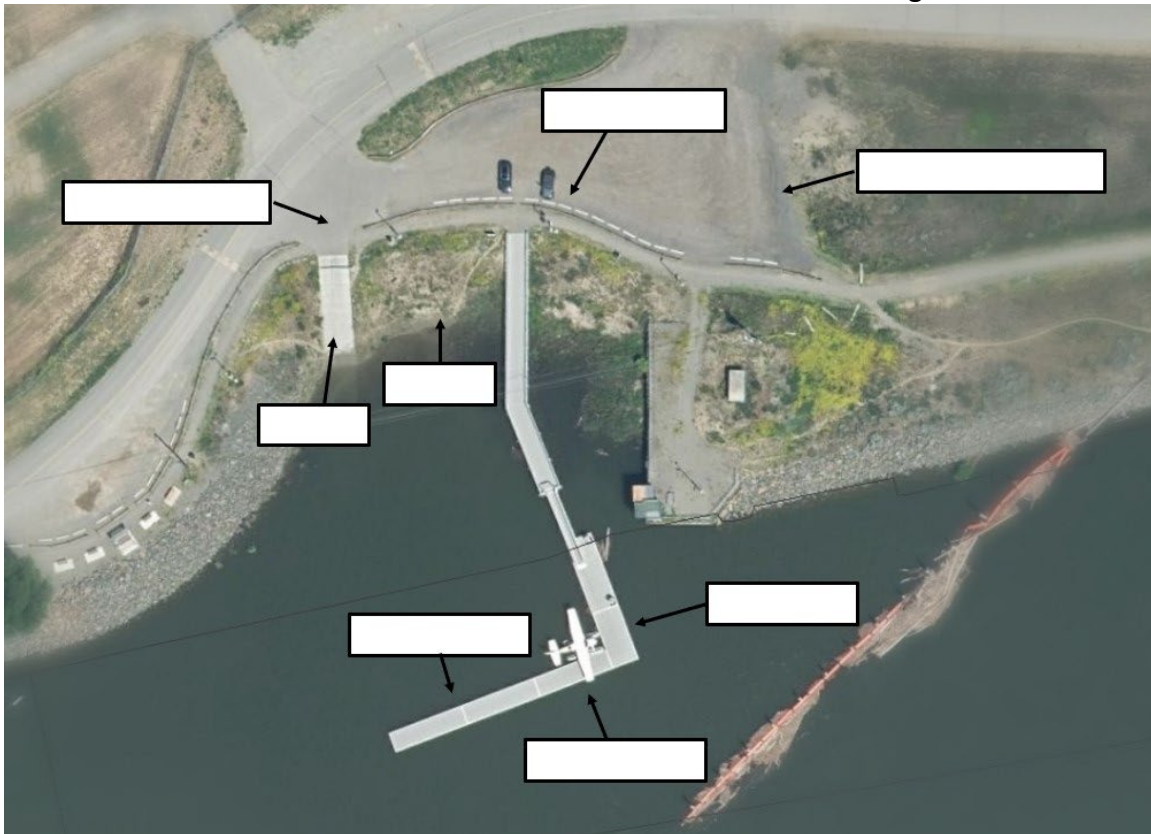
- 7. The primary use of the Kamloops Airport Floatplane Dock is:
 - a. Boat launch
 - b. Water Aerodrome
 - c. Park space

- 8. Where are pets allowed at the facility?
 - a. On the beach
 - b. Anywhere off leash
 - c. Only in designated areas and on a leash

- 9. The term “boat” in the BVOP manual includes:
 - a. Motorized watercraft
 - b. Canoes and kayaks
 - c. Other floatation devices
 - d. All of the above

- 10. Refer to the map below and assign the following locations:

- | | |
|--------------------|---------------------------|
| - Aircraft Parking | - Dock |
| - Beach | - Maneuvering Area |
| - Boat Parking | - Truck & Trailer Parking |
| - Launch | - Vehicle Parking |



BVOP Answer Key

Ques	Ans	Ques	Ans
1	B	6	D
2	C	7	B
3	D	8	C
4	C	9	D
5	C	10	

